



ENAPART



93 S Railroad Avenue Unit C
Bergenfield NJ 07621 USA
www.enapart.com
sales@enapart.com



Via del Canneto 35,
Borgosatollo, Brescia - Italia
www.enapart.it
vendite@enapart.it



Barbaros Mah. Ihlamur Bul. Aĝaoĝlu
My Newwork No:3/15 Ataşehir / İstanbul
www.enapart.net
satis@enapart.net



PRIVADA 10 B SUR #3908 COL.
ANZUREZ, C.P. 72530, PUEBLA, PUE
www.enapart.com.mx
sales@enapart.com.mx



Friedrich-Ebert-Anlage 36, 60325
Frankfurt am Main, Germany
www.enapart.de
anfrage@enapart.de



4 boulevard Carnot, 95400
villiers-le-bel, Paris, France
www.enapart.fr
sales@enapart.fr



65049, ОДЕСА, ВУЛИЦЯ ІВАНА
ФРАНКА, БУДИНОК 55, ПОВЕРХ 3
www.enapart.com.ua
sales@enapart.com.ua



MUNICIPIUL BUCUREȘTI, SECTOR 3,
B-DUL BASARABIA, NR.250, CORP P+5
www.enapart.ro
sales@enapart.ro



〒584-0023 大阪府富田林市若松町
東2丁目2番16号
www.enapart.co.jp
sales@enapart.co.jp



PLAZA NUESTRA SEÑORA DE LAS
NIEVES 12 ,LOCAL ,50012,ZARAGOZA
www.enapart.es
ventas@enapart.es



Складова база „Онгъл“, Склад А2, п.к.
4006, гр. Пловдив, България
www.enapart.bg
sales@enapart.bg



3 Austin Mews, High Street, Hemel
Hempstead, HP1 3AF , United Kingdom
www.enapart.co.uk
sales@enapart.co.uk

Filter element

Element description

M - Wire Mesh

A - Microfibre

Characteristics of filter elements with nominal filtration, M series

For wire mesh filter elements, filtration degree is defined as the maximum diameter of a sphere corresponding to the mesh size, in microns.

Characteristics of filter elements with absolute filtration, A series

For microfibre filter elements, filtration degree is defined by the test bench MULTIPASS ISO 16889.

Reference standards

All filter elements comply with the following ISO standards.

ISO 2941 - Collapse and burst resistance.

ISO 2942 - Bubble point test resistance.

ISO 2943 - Compatibility with fluids.

ISO 3723 - Resistance to axial deformation.

ISO 23181 - Fatigue test with flow.

ISO 3968 - Pressure drop.

ISO 16889 - Filtration efficiency by means of Multipass.

Multipass test in compliance new ISO 16889 Contaminant ISO MTD

Filtration	$\beta_{x@} \geq 1000$
Filter element	
A01*	<4
A03	5
A06	7
A10	10
A16	15
A25	20

* On request

International standards for fluid contamination control

Components	Recommended filtrations									
	12/10/7	13/11/8	14/12/9	15/13/10	16/14/11	17/15/12	18/16/13	19/17/14	20/18/15	
Servo valves			●	●	●					
Proportional Valves				●	●	●				
Variable displacement pumps.					●	●	●			
Cartridge valves						●	●	●		
Piston pumps						●	●	●		
Vane pumps							●	●	●	
Pressure - flow rate control valves							●	●	●	
Solenoid valves							●	●	●	
ISO code	12/10/7	13/11/8	14/12/9	15/13/10	16/14/11	17/15/12	18/16/13	19/17/14	20/18/15	
NAS code	1	2	3	4	5	6	7	8	9	
Absolute filtration recommended	$\beta_{<4@} \geq 1000$		$\beta_{5@} \geq 1000$		$\beta_{7@} \geq 1000$		$\beta_{10@} \geq 1000$	$\beta_{15@} \geq 1000$	$\beta_{20@} \geq 1000$	

Multiplication factor “Y” for definition of the pressure drop of filter elements.

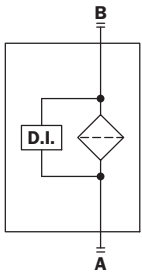
Reference viscosity 30 mm²/s

Filter Element	Absolute Filtration					
	H - S Series					
Type	A 0 3	A 0 6	A 1 0	A 1 6	A 2 5	
HP 011	1	424,58	319,74	235,17	194,44	163,78
	2	281,06	211,25	94,53	75,45	47,26
	3	130,14	97,50	43,63	34,82	21,81
	4	109,39	82,25	36,79	29,37	18,40
HP 021	2	216,2	162,5	72,72	58,04	36,36
	3	108,1	81,25	36,36	29,02	18,18
HP 050	1	47,33	34,25	21,50	20,50	14,71
	2	29,10	25,95	14,04	10,90	5,88
	3	20,85	19,50	10,68	8,61	4,36
	4	14,55	12,90	7,32	6,90	3,69
	5	9,86	9,34	6,40	4,80	2,50
HP 065	1	62,28	58,56	26,66	21,66	12,42
	2	43,30	36,63	17,66	14,44	8,88
	3	20,55	16,90	8,55	7,09	4,16
HP 135	1	29,16	25,33	13,00	12,47	5,92
	2	14,28	11,04	7,86	7,60	4,44
	3	8,96	7,46	4,89	4,16	3,07
HP 320	1	13,00	12,19	6,80	6,40	3,32
	2	6,45	5,31	3,01	2,89	1,73
	3	4,13	3,140	1,90	1,78	1,17
	4	3,17	2,71	1,80	1,70	1,10
HP 500	1	9,70	8,81	4,55	4,47	2,8
	2	5,46	4,63	2,88	2,68	2,2
	3	3,90	3,74	2,20	2,07	1,53
	4	3,10	2,48	1,56	1,53	1,02
	5	1,93	1,83	1,14	1,08	0,69

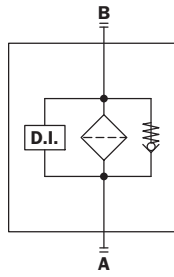
Filter Element	Absolute Filtration					
	H Series					
Type	A 0 3	A 0 6	A 1 0	A 1 6	A 2 5	
HF 320	1	6,50	6,20	3,95	3,32	2,70
	2	3,17	2,87	2,23	2,02	1,65
	3	2,60	2,40	1,64	1,62	1,42

Hydraulic symbols & Compatibility

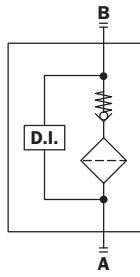
Style S



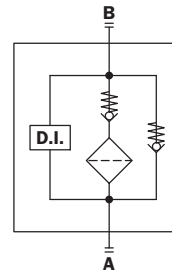
Style B



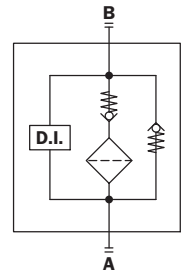
Style T



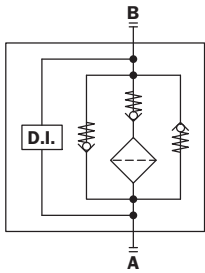
Style D



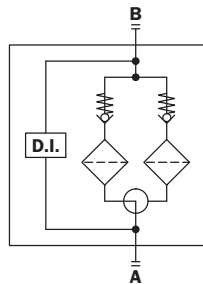
Style V



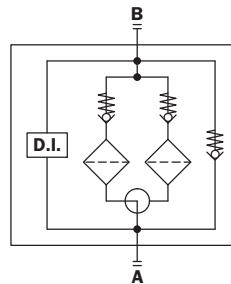
Style Z



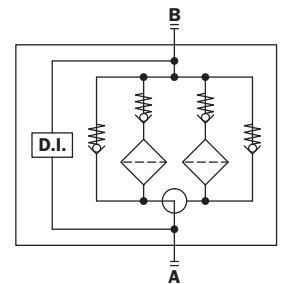
Style S
Serie FHD



Style B
Serie FHD 051



Style B
Serie FHD 326 - 333



Hydraulic symbols

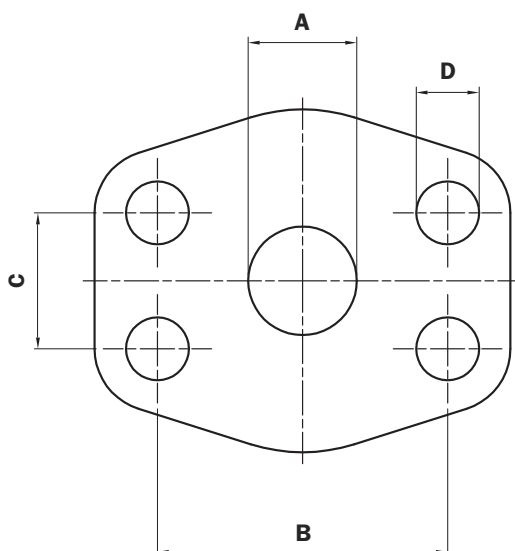
Filter series	Style S	Style B	Style T	Style D	Style V	Style Z
FMP 039	●	●				
FMM 050	●	●	●	●		
FHA 051	●	●	●	●		●
FMP	●	●	●	●		
FHP 010-011	●	●			●	●
FHP	●	●	●	●		
FHP 320-500	●	●	●	●	●	●
FHM CETOP	●					
FHM MANIFOLD	●	●	●	●		
FHB	●	●	●	●		
FHF 325	●	●				
FHD 021	●					
FHD 051	●	●				
FHD 326-333	●	●				

Compatibility (to ISO 2943)

- Housings compatible with:
Mineral oils, synthetic fluids
aqueous emulsions, water and glycol.
- The filter elements are compatible with:
Mineral oils, synthetic fluids.
Aqueous emulsions, water and glycol
(series W required: only for FHF 325 element).
- NBR seals series A, compatible with:
Mineral oils, synthetic fluids, aqueous emulsions
and water and glycol.
- FPM seals series V, compatible with:
Mineral oils, synthetic fluids
aqueous emulsions, water and glycol.

Sizes - Connections DN - SAE

FLANGE SAE 3000 - 6000 PSI



Connection to 3000 psi SAE flange

Dimension	3/4" SAE 3000 PSI	3/4" SAE 3000 PSI	1" SAE 3000 PSI	1" SAE 3000 PSI	1 1/4" SAE 3000 PSI	1 1/4" SAE 3000 PSI	1 1/2" SAE 3000 PSI	1 1/2" SAE 3000 PSI	2" SAE 3000 PSI	2" SAE 3000 PSI
	M	UNC	M	UNC	M	UNC	M	UNC	M	UNC
A	19	19	25	25	32	32	38	38	51	51
B	47,6	47,6	52,4	52,4	58,7	58,7	70	70	77,8	77,8
C	22,2	22,2	26,2	26,2	30,2	30,2	35,7	35,7	42,9	42,9
D	M10	3/8" UNC	M10	3/8" UNC	M10	7/16" UNC	M12	1/2" UNC	M12	1/2" UNC

Connection to 6000 psi SAE flange

Dimension	3/4" SAE 6000 PSI	3/4" SAE 6000 PSI	1 1/4" SAE 6000 PSI	1 1/4" SAE 6000 PSI	1 1/2" SAE 6000 PSI	1 1/2" SAE 6000 PSI	2" SAE 6000 PSI	2" SAE 6000 PSI
	M	UNC	M	UNC	M	UNC	M	UNC
A	19	19	32	32	38	38	51	51
B	50,8	50,8	66,7	66,7	79,4	79,4	96,8	96,8
C	23,8	23,8	31,8	31,8	36,5	36,5	44,5	44,5
D	M10	3/8" UNC	M14	1/2" UNC	M16	5/8" UNC	M20	3/4" UNC

SAE flange connections available on Pressure filters

Filter Type	Connections									
	SAE 3000 psi					SAE 6000 psi				
	3/4"	1"	1 1/4"	1 1/2"	2"	3/4"	1 1/4"	1 1/2"	2"	
FMP 135	X	X								
FMP 320			X	X						
FHP 135	X	X				X				
FHP 320			X	X			X			
FHP 500				X	X			X	X	
FHF 325								X		
FHD 333								X		