



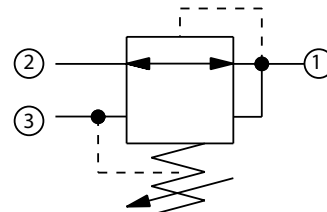
Pressure Reducing Valves Technical Information

Pressure Reducing, Relieving, Direct Acting CP230-1

OPERATION

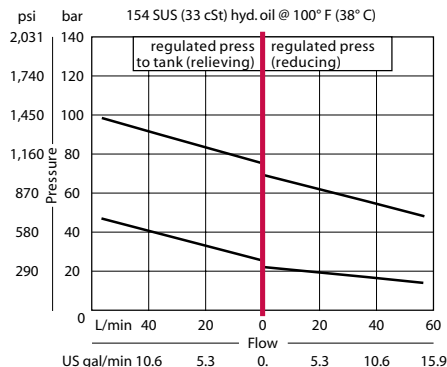
This is a direct-acting pressure reducing/relieving valve.

Schematic



SPECIFICATIONS

Theoretical performance



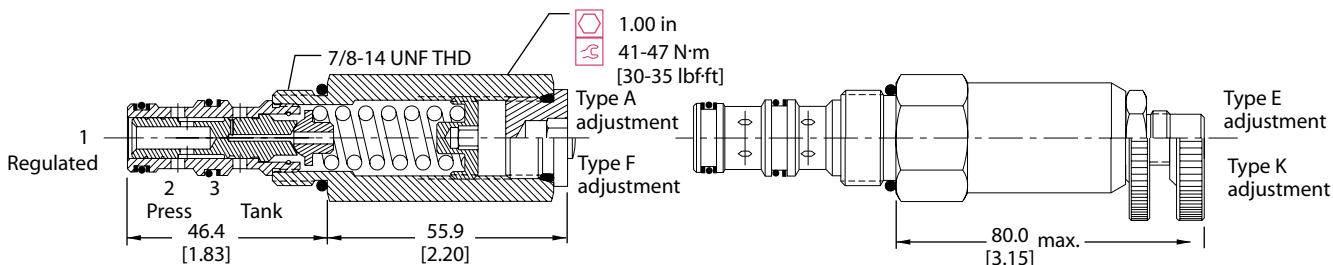
Specifications

Rated pressure	210 bar [3000 psi]
Rated flow at 7 bar [100 psi]	40 l/min [11 US gal/min]
Weight	0.23 kg [0.51 lb]
Cavity	SDC10-3

DIMENSIONS

mm [in]

Cross-sectional view



ORDERING INFORMATION

CP230 - 1 - B - 6S - A - C - 100			
Seals	Seal kit	Housing P/N	Pressure setting
B = Buna-N	120570	No Housing	Code x 10psi (0.69 bar)
V = Viton	120571	SDC10-3-SE-3B	Example: 100 = 1000 psi (70 bar)
Housing and ports		SDC10-3-SE-4B	Pressure range
0 = No Housing		CP10-3-6S	A = 4-28 bar [50-400] psi
SE3B = Al, 3/8 BSP		CP10-3-8S	Std. setting 17 [250]
SE4B = Al, 1/2 BSP			B = 5-55 bar [75-800] psi
6S = Al, #6 SAE			Std. setting 28 [400]
8S = Al, #8 SAE			C = 7-97 bar [100-1400] psi
Other housings available			Std. setting 69 [1000]
Adjustment option			D = 34-166 bar [500-2400] psi
A = Internal			Std. setting 103 [1500]
E = External			
F = Tamper resistant			
K = Knob			